

Exhibitor Descriptions

IEEE Engineering in Medicine and Biology Society, IEEE EMBS – Booth 5

The Engineering in Medicine and Biology Society of the IEEE advances the application of engineering sciences and technology to medicine and biology, promotes the profession, and provides global leadership for the benefit of its members and humanity by disseminating knowledge, setting standards, fostering professional development, and recognizing excellence.

EMBS Executive Office, 445 Hoes Lane, Piscataway, NJ, 08854, Tel: 732.981.3433, Email: emb-exec@ieee.org, Web: www.embs.org

Platinum Level Partners

Boston Scientific – Booth 6

Boston Scientifics' mission is to improve the quality of patient care and the productivity of health care delivery through the development and advocacy of less-invasive medical devices and procedures.

- The world's largest medical device company dedicated to less-invasive medicine
- More than 25,000 employees
- 26 manufacturing, distribution & technology centers
- Delivering more than 13,000 products in over 45 countries
- Investing nearly \$6 billion in new technologies over the past five years

4100 Hamline Avenue North, St. Paul, MN 55112, Web: www.bostonscientific.com

Department of Biomedical Engineering, University of Minnesota – Booth 3

The Department of Biomedical Engineering is an academic unit of the Institute of Technology at the University of Minnesota. It serves to administer biomedical engineering degree programs at all levels. While research possibilities span the full spectrum of biomedical engineering, the Department has established interests in cardiovascular and neural engineering and seeks to focus growth and excellence in these research areas. 312 Church Street SE, 7-105 Hasselmo Hall, Minneapolis, MN, 55455, Tel: 612.624.4507, Email: bmedus@umn.edu

Institute for Engineering in Medicine, University of Minnesota – Booth 2

The Institute for Engineering in Medicine (IEM) is a research organization that connects and amplifies research efforts between engineering and health sciences faculty members. It funds interdisciplinary, goal-oriented research to create new medical devices and solve clinical problems. In addition to its research efforts, the IEM promotes collaborative programs with industry and strives to serve the educational needs of the University and the Corporate Biomedical Communities in the area of Engineering in Medicine. 420 Delaware Street SE, D242 Mayo Building, Minneapolis, MN, 55455, Tel: 612.624.8483, Email: iem@umn.edu, Web: www.iem.umn.edu

Medtronic – Booth 4

Medtronic is a global leader in medical technology, redefining how technology is used in the management of chronic disease. Our deep understanding of technology and human physiology yields unique insight into a range of therapeutic areas, including heart disease, diabetes, neurological disorders, spinal conditions and vascular diseases. Medtronic is transforming the treatment of chronic disease and changing the lives of nearly 6 million patients worldwide each year. 710 Medtronic Parkway, Mailstop L100, Minneapolis, MN, 55432-5604, Tel: 1-800-633-8766, Web: www.medtronic.com

National Institute of Biomedical Imaging and Bioengineering – Booth 23

The National Institute of Biomedical Imaging and Bioengineering (NIBIB) leads the development and accelerates the application of emerging and breakthrough biomedical technologies in order to improve human health. The Institute is committed to integrating the engineering and physical sciences with the life sciences to advance basic research and medical care. Cheryl Fee, 31 Center Drive, Room 1C14, Bethesda, MD, 20892, Tel: 301.451.6772, Email: feech@mail.nih.gov

Silver Level Partners

Hollingsworth & Funk Intellectual Property Law – Booth 12

Intellectual property involves much more than filing patent applications. Successfully protecting IP requires attorneys who understand business objectives just as well as technological innovations. We work closely with clients to develop comprehensive strategies to maximize IP investments in the US and worldwide. Clara Davis, 8009 34th Avenue South, Suite 125, Bloomington, MN, 55345, Tel: 952.854.2717, Email: cdavis@hfjplaw.com

Kinea Design – Booth 10

Kinea Design provides enlightened research, development, and engineering design services. We specialize in human-interactive motion control, including assist devices for ergonomics, rehabilitation robotics, prosthetics, and clinical/ biomedical instrumentation. Our design and development activities are guided by careful user studies and appreciation of the nuances of the human-machine interface. *Julio J. Santos-Munné, 1711 – 1 Darrow Avenue, Evanston, IL, 60201, Tel: 847.864.1005 x 101, Email: jsantos@kineadesign.com, Web: www.kineadesign.com*

QRDC, Inc. – Booth 11

QRDC cures noise and vibration ailments for a wide range of clients both here in Minnesota and throughout the nation. QRDC has successfully developed, produced, marketed and supported high quality, cost effective solutions for noise, acoustic, vibration and shock related cases for over 15 years. Our award winning technical teams understanding of industrial problems and how those problems relating to human health, customer satisfaction, machine, product, or structural performance is the best in the field. Our team provides that intrinsic "we understand" capability that leads to uncommon discoveries in problem solving. *Dave Tarnowski, 125 Columbia Court North, Chaska, MN, 55318, Tel: 952.556.5205, Email: dtarnowski@qrdc.com*

Whitaker International Fellows and Scholars Program, IIE – Booth 9

The Whitaker International Fellows and Scholars Program provides grants to emerging U.S.-based leaders in biomedical engineering, with a goal of building international bridges. Whitaker Program grants fund projects - including research, coursework, public policy work - relevant to both the grant recipient and to enhancing the biomedical engineering field. *Vijay Renganathan, 809 United Nations Plaza, New York, NY, 10017, Tel: 212.984.5442, Email: Whitaker@iie.org, Web: www.whitaker.org*

Exhibitors

Advanced Platform Technology Center – Booth 24

The Advanced Platform Technology (APT) Center was established in 2005 in collaboration with Case Western Reserve University to develop technical interventions that serve the clinical needs of veterans with motor and sensory deficits and limb loss. The APT Center provides clinicians and researchers with new tools for rehabilitation, treatment, and scientific inquiry that lead to enhanced independence and societal participation. *Suzana Iveljic, 10701 East Boulevard, Cleveland, OH, 44106, Tel: 216.791.3800 x 6001, Email: sci4@case.edu*

AGA Medical – Booth 13

AGA Medical Corporation, based in Plymouth, Minnesota, is the leader in developing interventional devices to treat structural and congenital heart defects. The company has revolutionized the treatment of atrial septal, patent foramen ovale and ventricular septal defects, and vessel embolization with the AMPLATZER® line of occlusion devices. *5050 Nathan Lane North, Plymouth, MN, 55442, Tel: 763.513.9227, Web: www.amplatzer.com*

BIOPAC Systems, Inc. – Booth 21

Data acquisition hardware, software, amplifiers, transducers, telemetry and data logging systems with VR workstations and MRI solutions. Specialized analysis for EMG, EEG, ECG, GSR, Respiration, ICG, Blood Pressure, LVP, Monophasic Action Potential, EGG, RSA, and a host of signal processing methods. API and data export options. Research and educational systems. *42 Aero Camino, Goleta, CA, 93117, Tel: 805.685.0066, Email: info@biopac.com*

Brain Products – Booth 22

Brain Products, a leading manufacturer of neurophysiological research products, offers:

- Electrode caps for EEG/ERP recordings and EEG & fMRI, EEG & MEG, EEG & TMS co-registrations
- EEG/ERP amplifiers (up to 256 channels) covering various applications
- Analysis software (including source analysis)
- Education hard- and software

Zeppelinstrasse 7, Gilching, 82205, Germany, Tel: +49 8105733840, Email: sales@brainproducts.com

CRC Press – Taylor and Francis Group – Booth 26

CRC Press - Taylor & Francis Group is a premier publisher of scientific and technical books, journals, and electronic products. Visit our booth to browse our selection of authoritative newly published and bestselling titles in Biomedical – Engineering, Technology, and Imaging and receive a 15%-25% discount. *Michael Slaughter, 6000 Broken Sound Parkway NW, Boca Raton, FL, 33487, Tel: 415.897.1238, Email: michael.slaughter@taylorandfrancis.com*

Design of Medical Devices Conference – Booth 18

The University of Minnesota's Institute for Engineering in Medicine's Medical Devices Center, the Institute of Technology, and the Academic Health Center present the 9th annual Design of Medical Devices Conference. The conference will be held April 13-15, 2010 at the Radisson University Hotel in Minneapolis, Minnesota, adjacent to the University of Minnesota campus. *Alyssa Davidson, 111 Church Street SE, Room 313 Mechanical Engineering Building, Minneapolis, MN, 55455, Tel: 612.624.2901, Email: dmd@mc.umn.edu*

Devicix – Booth 15

Devicix LLC is a contract medical device engineering firm. It's focused 100% on developing medical devices for clients with an emphasis on design controls and conformance to regulatory standards. Their 32 engineering professionals are experienced in orthopedics (spine & trauma), cardiology, dental, respiratory therapy and fluid delivery systems. *Rick Stein, 7680 Executive Drive, Eden Prairie, MN, 55344, Tel: 952.905.2891, Email: rstein@devicix.com, Web: www.devicix.com*

EIC Biomedical – Booth 17

EIC Biomedical provides electrode fabrication, coating, and testing for medical device companies and academic institutions conducting neural prosthesis development and research. We specialize in low impedance coatings for stimulation and recording of neural tissue, in metal and insulating dielectric coatings for multielectrode array fabrication, and in electrochemical and long-term stability testing. *Stuart F. Cogan, 111 Downey Street, Norwood, MA, 02062, Tel: 781.769.9450, Email: scogan@eicbiomedical.com*

EMBC 2010 – Booth 28

The 32nd Annual International Conference of the IEEE Engineering in Medicine and Biology Society, EMBC'2010 will be held from August 31 to September 4, 2010 at the Buenos Aires Sheraton Hotel in Buenos Aires, Argentina. Visit the EMBC'2010 website at <http://embc2010.embs.org>. *EMBS Executive Office, 445 Hoes Lane, Piscataway, NJ, 08854, Tel: 732.981.3451, Email: emb-conferences@ieee.org*

IEEE Corporate Strategy and Communications – Booth 8

IEEE is the world's largest professional association advancing innovation and technological excellence for the benefit of humanity. IEEE and its members inspire a global community to innovate for a better tomorrow through its highly-cited publications, conferences, technology standards, and professional and educational activities. IEEE is the trusted "voice" for engineering, computing and technology information around the globe. *Beverly Banks, 445 Hoes Lane, Piscataway, NJ, 08854, Tel: 732.562.6859, Email: b.banks@ieee.org*

IMEC – Booth 25

IMEC 's Human++ Program enhances lifestyle and healthcare through nanoelectronics. The program includes R&D on wearable health and comfort monitoring, smart implants, molecular diagnostics and imaging, brain-IC interfaces. IMEC offers its expertise to clinical, pharmaceutical, medical devices and biotechnology industries to enhance diagnostics, therapy, drug discovery and development. *Katrien Marent, Kapeldreef 75, Leuven, 3001, Belgium, Tel: 003216281211, Email: katrien.marent@imec.be, Web: www.imec.be*

Meet Minneapolis: Official Convention and Visitors Association – Booth 1

Visit our booth to learn about Mississippi Riverboat tours, the Mall of America, Minnesota Zoo, local museums, theatres, sports, and restaurants, and other attractions. www.minneapolis.org

Morgan & Claypool Publishers – Booth 27

Morgan & Claypool Publishers is a leading digital publisher of books in Biomedical Engineering, including Tissue Engineering, and the Life Sciences. All titles are published online in PDF and in paperback via print-on-demand. Visit www.morganclaypool.com/page/bec for a list of titles. *Joel Claypool, 1537 Fourth Street #228, San Rafael, CA, 94901, Tel: 415.462.0004, Email: claypool@morganclaypool.com*

Nanofabrication Center, University of Minnesota – Booth 19

The Nanofabrication Center (NFC) is an interdisciplinary, state-of-the-art facility for microelectronics research and product development, located at the University of Minnesota. Founded in 1990, the NFC provides tools and services to companies working in advanced microelectronics, high performance sensors, microminiaturized optical systems, microfluidics, and biomedical devices. *James Marti, PhD, 200 Union Street SE, Minneapolis, MN, 55455, Tel: 612.626.0732, Email: jmarti@umn.edu*

Office of Technology Commercialization, University of Minnesota – Booth 7

The University of Minnesota's Office for Technology Commercialization oversees all aspects of technology commercialization, including patenting and licensing of intellectual property, and development of start-up companies. The U of MN is particularly well-known for innovations in medical technology, and has growing portfolios in medical devices & systems, biopharma, nanotechnology, and software & digital assets. *Joe Hofmeister, Tel: 612.624.8293, Email: jhofmeister@umn.edu, Web: www.research.umn.edu/techcomm/*

Oregon Center for Aging and Technology – Booth 16

The Oregon Center for Aging & Technology (ORCATECH) is a collaborative research center at the Oregon Health & Science University that includes academic, industry and community partners. Through interactive and cross-disciplinary research, ORCATECH is developing a new clinical paradigm of in-home continuous assessment that focuses on early detection of health problems and early intervention in order to facilitate independence. *Tamara Hayes, PhD, 3303 SW Bond Avenue CH1313, Portland, OR, 97239, Tel: 503.418.9315, Email: hayes@bmc.ogi.edu*

Simatra Modeling Technologies – Booth 14

Simatra Modeling Technologies provides innovative solutions for biophysical simulation and embedded computing. Simatra's simEngine software automatically turns high-level mathematical model descriptions into high-performance code for multi-core processors, graphics processing units (GPUs), and field-programmable gate arrays (FPGAs), substantially improving simulation rates over conventional solutions. *Michael Sorensen, 75 5th Street NW, Atlanta, GA, 30308, Tel: 404.551.4303, Email: sorensen@simatratechnologies.com*

Sonometrics Corporation – Booth 30

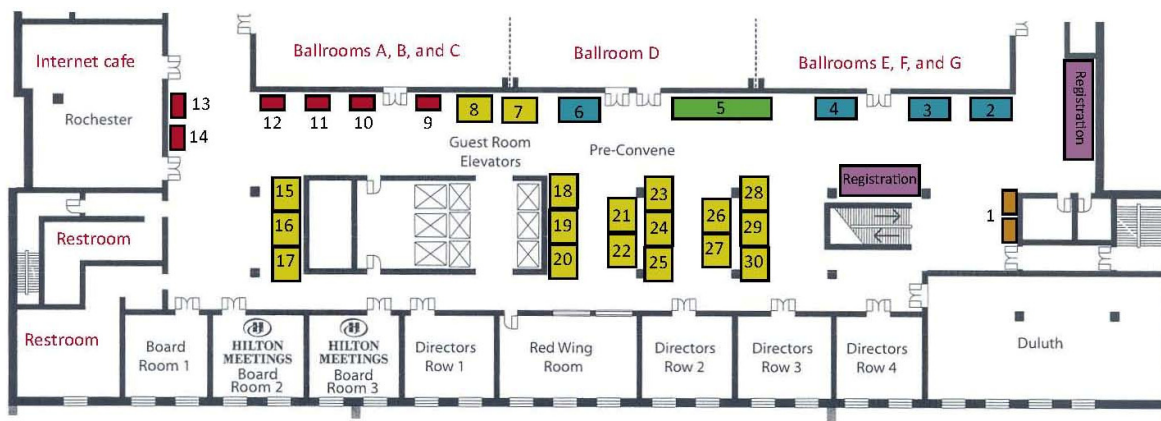
Sonometrics makes instrumentation, sensors, data acquisition hardware and software. Products used by medical research labs, drug and device companies to measure and compute hemodynamic (CO, EF) PV loop (Emax, PRSW) and 3-D ventricular/valve geometry/motion. In-vivo evaluation of LVADs, stents, valve implants, electro/mechanical assist devices, strain, motion, shape. *Gus Kalogeros, 500 Nottinghill Road, London, Ontario, Canada N6K 3P1, Tel: 519.474.6464, Email: sales@sonometrics.com*

Springer Science and Business Media – Booth 29

Knowledge, information and quality - these are the three things that shape Springer's business activities. We develop, manage and disseminate knowledge - through books, journals and the Internet. We work with the world's best academics and authors in long-standing loyal partnerships based on mutual trust and we are always open to new input. *Michael D. Weston, 233 Spring St., New York, NY, 10013, Tel: 212.620.8429, Email: michael.weston@springer.com*

Tucker-Davis Technologies – Booth 20

TDT is a leading manufacture of products ranging from electrodes to complete workstations for neurophysiology and evoked potentials. Core product include: OpenEx Software Suite for multi-channel neurophysiology and spike sorting, the Z-Series BioAmp (up to 256 channels), laser-cut microwire arrays, ZIF-Clip® headstages, and the new MZ60 MEA Interface. *Victor Rush, PhD, 11930 Research Circle, Alachua, FL, 32615, Tel: 386.482.9622, Email: info@tdt.com, Web: www.tdt.com*



Booth - Organization Exhibiting

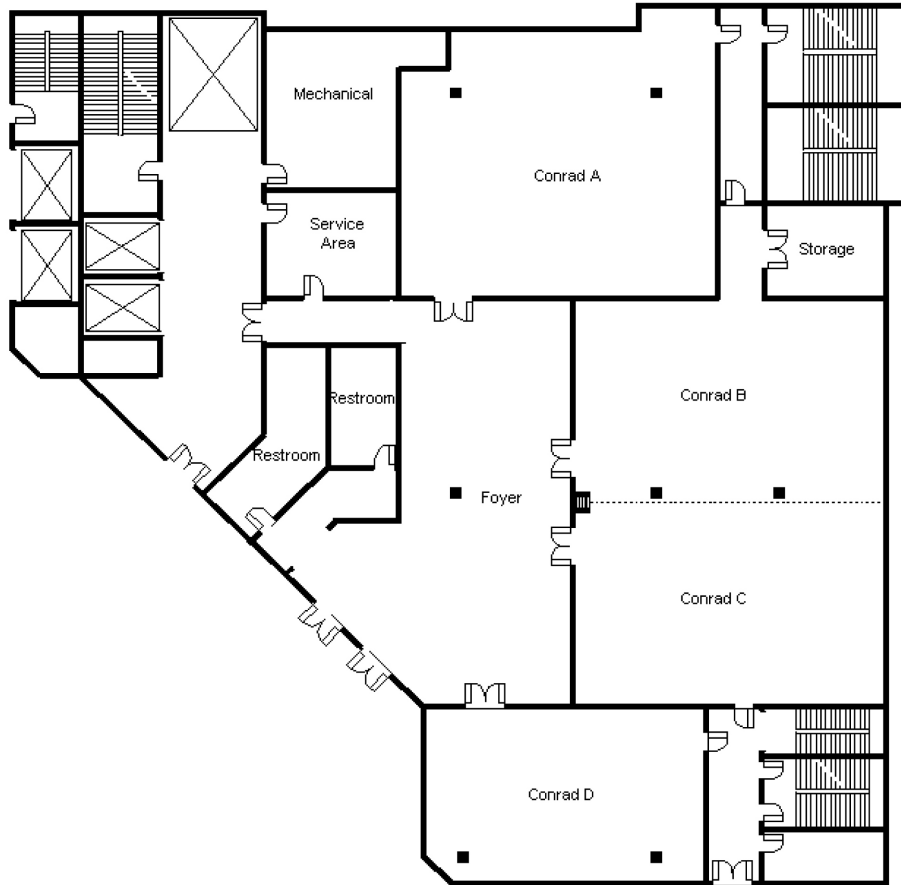
- 1 Meet Minneapolis: Official Convention and Visitors Association
- 2 Institute for Engineering in Medicine, University of Minnesota
- 3 Biomedical Engineering Department, University of Minnesota
- 4 Medtronic
- 5 Engineering in Medicine and Biology Society (EMBS)
- 6 Boston Scientific
- 7 Office of Technology Commercialization, University of Minnesota
- 8 IEEE Corporate Strategy and Communications
- 9 Whitaker International Fellows and Scholars Program
- 10 Kinea Design
- 11 QRDC, Inc.
- 12 Hollingsworth & Funk Intellectual Property Law
- 13 AGA Medical
- 14 Simatra Modeling Technologies
- 15 Devicix

Booth - Organization Exhibiting

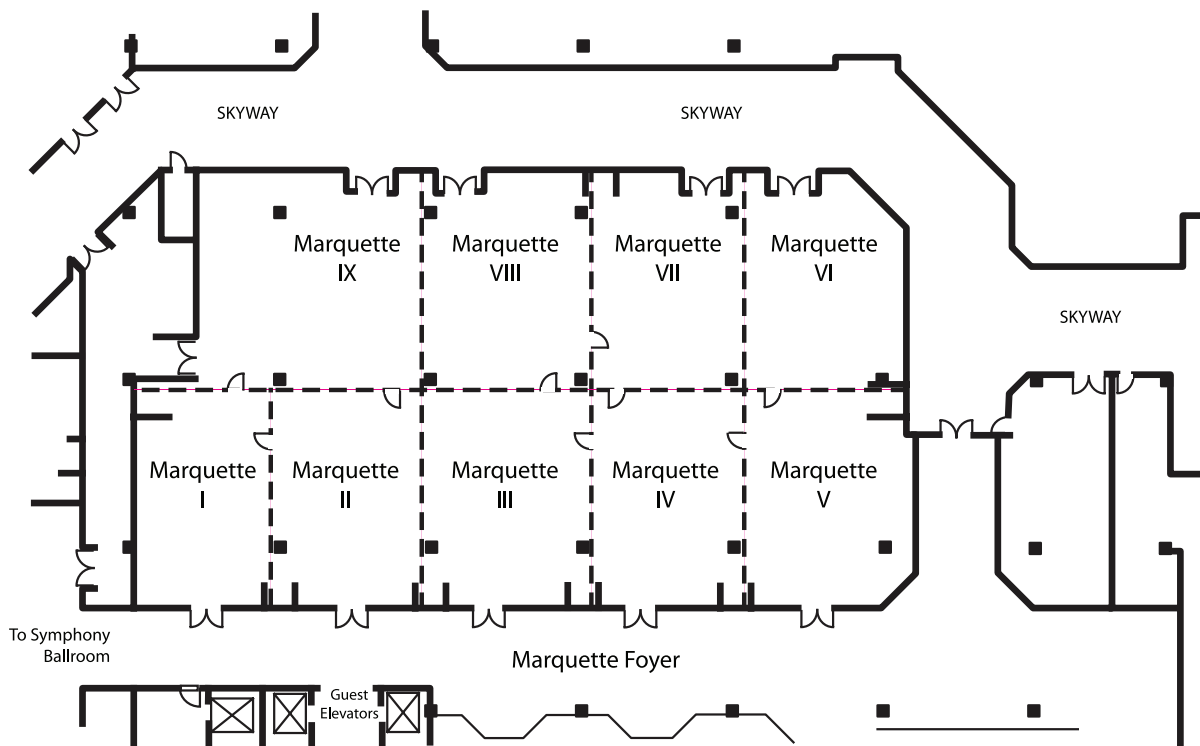
- 16 Oregon Center for Aging & Technology
- 17 EIC Biomedical
- 18 Design of Medical Devices Conference
- 19 National Nanotechnology Infrastructure Network (NNIN)
- 20 Tucker-Davis Technologies
- 21 BIOPAC Systems, Inc.
- 22 Brain Products
- 23 National Institute of Biomedical Imaging and Bioengineering
- 24 Advanced Platform Technology Center
- 25 IMEC
- 26 CRC Press - Taylor and Francis Group
- 27 Morgan & Claypool Publishers
- 28 Engineering in Medicine and Biology Conference (EMBC) 2010
- 29 Springer Science and Business Media
- 30 Sonometrics Corporation

HILTON MINNEAPOLIS 2ND FLOOR PLAN

CONRAD ROOMS



MARQUETTE BALLROOM



HILTON MINNEAPOLIS 3RD FLOOR PLAN

