

Multiscale autoregressive identification of neuro-electrophysiological systems

Timothy P. Gilmour, *Student Member, IEEE*, Thyagarajan Subramanian

Abstract—Electrical signals between connected neural nuclei are difficult to model because of the complexity and high number of paths within the brain. Simple parametric models are therefore often used. A multiscale version of the autoregressive with exogenous input (MS-ARX) model has recently been developed which allows selection of the optimal amount of filtering and decimation depending on the signal-to-noise ratio and degree of predictability. In this paper we apply the MS-ARX model to cortical electroencephalograms and subthalamic local field potentials simultaneously recorded from anesthetized rodent brains. We demonstrate that the MS-ARX model produces better predictions than traditional ARX modeling. We also adapt the MS-ARX results to show differences in inter-nuclei predictability between normal rats and rats with 6OHDA-induced parkinsonism, indicating that this method may have broad applicability to other neuro-electrophysiological studies.

I. INTRODUCTION

VARIOUS types of methods have been used to assess the degree of similarity or shared information between two signals. The methods used depend on the type of the presumptive system which processes the one “input” signal into the other “output” signal. Two basic classifications of systems are whether they are memoryless or not, and whether they are linear or not.

Common linear memoryless methods include the cross-correlation in the time-domain or coherence in the frequency domain. Common linear models with memory include autoregressive models with exogenous input (ARX), autoregressive moving average (ARMA), Box-Jenkins, Output-Error, and linear state-space models.

Higher-order nonlinear methods with memory are also sometimes used, such as polyspectral models, nonlinear ARX models, neural networks, Hammerstein-Wiener models, and Volterra models, but these are more difficult to train.

Other statistical evaluations of the similarity focus on the transfer of information between two signals, rather than explicit modeling and prediction. Examples of these analyses

Manuscript received April 15, 2011. This work was supported in part by the NIH NINDS RO1NS42402, HRSA DIBTH0632, PA Tobacco Settlement Funds Biomedical Research Grant, PSUHMC Movement Disorders Brain Repair Fund, NCCAMR21 AT001607 to Thyagarajan Subramanian, and GRSA to Tim Gilmour via PA Tobacco Settlement Funds (the Pennsylvania Department of Health specifically disclaims responsibility for any analyses, interpretations or conclusions).

T. P. Gilmour is with the Pennsylvania State University, Electrical Engineering Department, University Park, PA 16802 USA (phone: 717-531-0003 x 283837; fax: 717-531-0996-; e-mail: timgilmour@psu.edu).

T. Subramanian is with the Pennsylvania State University Hershey Medical Center, Neurology Department, 500 University Drive, Hershey, PA 17033 USA (e-mail: tsubramanian@hmc.psu.edu).

include Granger causality analysis, time-delay mutual information, and transfer entropy. The information-theoretic analyses can measure nonlinear as well as linear effects.

Complex systems such as the brain are difficult to analyze because of the huge number of individual neuronal/synaptic paths between nuclei, the nonlinear nature of neuronal connections, and the operation at multiple time scales.

One approach is to use simple low-order linear models to approximate the transfer function relationship, such as autoregressive with exogenous (ARX) models. The performance of such models depends crucially on the model order, scale, and pre-filtering. A multiscale version of the autoregressive with exogenous input (MS-ARX) model has recently been developed by Nounou and colleagues [1]. The MS-ARX model allows automatic selection of the optimal scale for the ARX prediction.

In this paper we adapt and apply the MS-ARX model to evaluate the degree of information transfer between cortical electroencephalogram (EEG) and subthalamic nucleus (STN) local field potential (LFP) signals. In a rat model of Parkinson's disease, the multiscale ARX approach showed significant differences in connectivity compared to normal.

II. METHODS

A. Autoregressive System Identification

The ARX model is a common method to represent output signals from an unknown system by using a linear combination of past output signal values and past input values. We will be following the notation of Nounou and colleagues in our model description. The equation for the ARX model is

$$y(k+1) = \sum_{i=0}^p \alpha_i y(k-i) + \sum_{m=0}^q \beta_m u(k-m) \quad (1)$$

where y is the output, u is the input, α_i and β_m are the estimated system coefficients, and p and q are the maximum orders of the autoregressive and input filters, respectively.

Equation (1) may be written in matrix form as

$Y = X\theta$, where

$$Y = \begin{bmatrix} y(n) \\ y(n-1) \\ y(n-2) \\ \vdots \end{bmatrix}, \quad \theta = [\alpha_1 \cdots \alpha_p \quad \beta_1 \cdots \beta_q]^T, \text{ and}$$

$$X = \begin{bmatrix} y(n-1) \cdots & y(n-p) & u(n-1) & \cdots & u(n-q) \\ y(n-2) \cdots & y(n-p-1) & u(n-2) & \cdots & u(n-q-1) \\ y(n-3) \cdots & y(n-p-2) & u(n-3) & \cdots & u(n-q-2) \\ \vdots & \vdots & \vdots & \ddots & \vdots \end{bmatrix}. \quad (2)$$

The weight parameters α_i and β_m may be solved using least squares:

$$\theta_{LS} = (X^T X)^{-1} X^T Y. \quad (3)$$

The maximum filter lengths p and q may be estimated by minimizing some criterion such as the Akaike information criterion (AIC):

$$\text{AIC} = r - 2 \ln(L), \quad (4)$$

where r is the number of model parameters, and L is the likelihood function quantifying the model goodness-of-fit.

B. Wavelet Decomposition

Signals may be decomposed into a multiscale time-frequency representation by projecting the signal onto an orthonormal set of basis functions. These functions correspond to a particular scale and translation of a prototype scaling function $\phi_{jk}(t)$ and wavelet function

$\psi_{jk}(t)$, given by:

$$\phi_{jk}(t) = \sqrt{2^{-j}} \phi(2^{-j}t - k) \text{ and}$$

$$\psi_{jk}(t) = \sqrt{2^{-j}} \psi(2^{-j}t - k). \quad (5)$$

For the Haar wavelet used in this paper,

$$\phi(t) = \begin{cases} 1, & 0 \leq t \leq 1 \\ 0, & |t| > 1 \end{cases}, \quad \psi(t) = \begin{cases} 1, & 0 \leq t < 0.5 \\ -1, & 0.5 \leq t \leq 1 \\ 0, & |t| > 1 \end{cases}. \quad (6)$$

C. Multiscale ARX Modeling

We applied the multiscale ARX approach presented by Nounou and colleagues. Briefly, the input (EEG) and output (LFP) data was first split in half into a training and a validation set. Second, both sets were decomposed using Haar wavelets into multiple scaled approximations in addition to the original undecimated scale. Third, at each scale an ARX model was trained using the model structure selected by an AIC minimization. Fourth, the computed ARX model from each scale was converted to the original sampling rate using the following theorem proved by Nounou et al: an ARX transfer function

$Y_j(z)/U_j(z) = G(z)$ at scale j is equivalent to the

transfer function $Y_0(z)/U_0(z) = G(z^{2^j})$ at scale 0, the original undecimated scale. Fifth, the optimal scale ARX model was selected as the one which provided the smallest mean-square error (MSE) on the validation set (Fig. 1). The MSE is defined as:

$$\text{MSE} = \frac{1}{n} \sum_k [\hat{y}(k) - y_n(k)]^2. \quad (7)$$

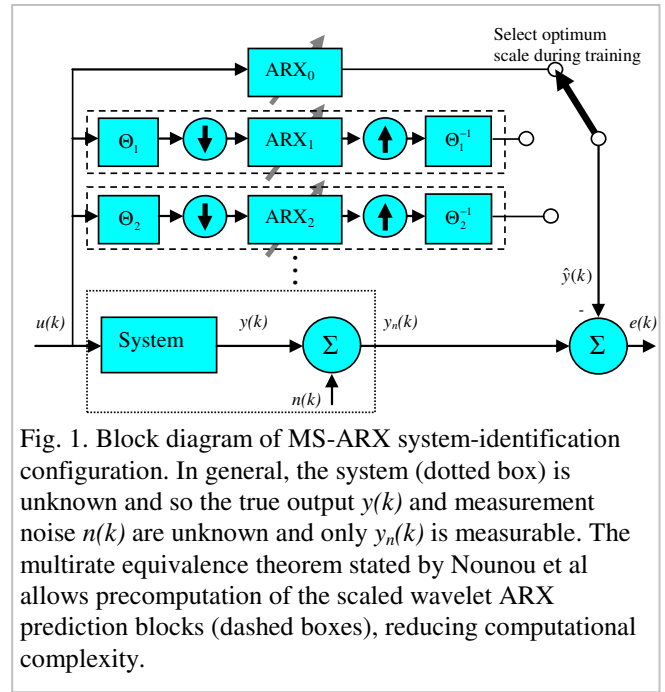


Fig. 1. Block diagram of MS-ARX system-identification configuration. In general, the system (dotted box) is unknown and so the true output $y(k)$ and measurement noise $n(k)$ are unknown and only $y_n(k)$ is measurable. The multirate equivalence theorem stated by Nounou et al allows precomputation of the scaled wavelet ARX prediction blocks (dashed boxes), reducing computational complexity.

D. Neural Data Collection

The motor cortex has been shown to project into the subthalamic nucleus (STN), thus implying a system of unknown electrical parameters with the EEG as the input and the STN local field potential (LFP) as the output [2]. Furthermore, studies in preclinical models of Parkinson's disease have shown increased correlation between neighboring neurons [3] and increased coherence in the 15-30 Hz band between basal ganglia nuclei [4, 5].

To examine the connection strength between these disparate brain areas using MS-ARX, we simultaneously recorded voltage data from the motor cortex EEG and STN LFP of anesthetized normal rats and hemiparkinsonian (HP) rats. Parkinsonism was induced by the vendor (Charles River) by 6-hydroxydopamine injection as detailed elsewhere [6]. All procedures were approved by the Pennsylvania State University Institutional Animal Care and Use Committee.

For EEG recording, animals were deeply anesthetized with urethane, with nominal initial dose 1.3 g/kg (i.p.) and additional doses given as needed to maintain surgical anesthesia. Stainless steel screws were implanted above bregma and above motor cortex ($AP +3.7 \pm 1.0\text{mm}$, $ML +2.5$), and the EEG signal recorded as the potential difference between these screws was subsequently filtered between 0.1 Hz - 500 Hz (3500, A-M Systems), amplified, and digitized at a final rate of 200 samples per second. The LFP signal was taken from the tip of the tungsten microelectrode (1-2 M Ω , FHC Inc), filtered between 5 Hz - 500 Hz, amplified, and digitized.

Recordings were taken from 9 normal rats (37 distinct STN sites) and 8 HP rats (26 distinct STN sites). Electrode tracts were histologically confirmed.

We used a maximum of 260 taps in our AIC structure selection step. This maximum was empirically selected

based on the observation that the peak frequencies in our data were usually between 0.8-1.3 Hz or higher, thus allowing at least one cycle period within the ARX filter length at scale zero. The maximum wavelet decomposition level was 4. Only recordings with robust slow-wave activity were included in the analysis [7].

III. RESULTS

Table 1 shows the MSEs at different scales. The undecimated scale was the optimal scale for approximately half of the recordings. The other recordings saw better ARX prediction performance at higher wavelet scales (more heavily-filtered wavelet approximations).

The mean MSE at the optimum scale was significantly lower in the HP group compared to the normal group (Fig. 2, $p < 0.05$, rank-sum test). Also, the ratio (computed for each individual recording) of the mean of the absolute value of the best-scale AR coefficients (α_i) to the mean of the absolute value of the best-scale exogenous input coefficients (β_m) was significantly lower in the HP group (Table 2, $p < 0.05$, rank-sum test). Figure 3 and 4 show samples of the wavelet decimation and MS-ARX predictions, illustrating the differences between scales.

Table 1 – Mean MSE at different scales across all recordings. Numbers in parentheses are the percent of neuronal recordings which selected that particular scale as optimum.

Scale	MSE (mean \pm SEM)	
	Normal	HP
j = 0	1.005 \pm 0.015 (51%)	0.953 \pm 0.015 (56%)
j = 1	1.008 \pm 0.014 (11%)	0.958 \pm 0.014 (24%)
j = 2	1.012 \pm 0.014 (3%)	0.968 \pm 0.014 (4%)
j = 3	1.013 \pm 0.012 (8%)	0.973 \pm 0.012 (8%)
j = 4	1.019 \pm 0.010 (27%)	1.000 \pm 0.010 (8%)

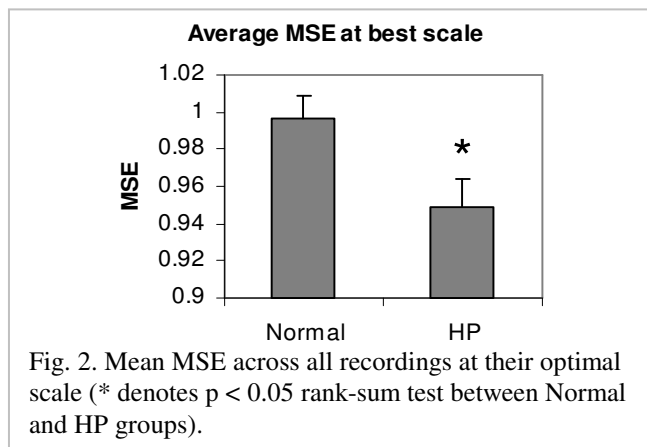


Fig. 2. Mean MSE across all recordings at their optimal scale (* denotes $p < 0.05$ rank-sum test between Normal and HP groups).

Table 2 – Parameter summary for normal and hemiparkinsonian recordings. Each row shows the mean (\pm SEM) absolute value of the parameter at the optimum scale for each recording (* denotes $p < 0.05$ rank-sum test between Normal and HP groups).

Mean of Parameter:	Normal	HP
AR coeff.s	0.21 \pm 0.024	0.19 \pm 0.025
Exogenous input (X) coeff.s	0.083 \pm 0.016	0.15 \pm 0.033
Ratio of AR to X coeff.s	6.4 \pm 0.87	4.9 \pm 1.26*
Number of nonzero AR coeff.s	157.3 \pm 18.5	177.8 \pm 19.3
Number of nonzero X coeff.s	156.3 \pm 18.5	176.9 \pm 19.3
Best scale	1.49 \pm 0.29	1.00 \pm 0.27

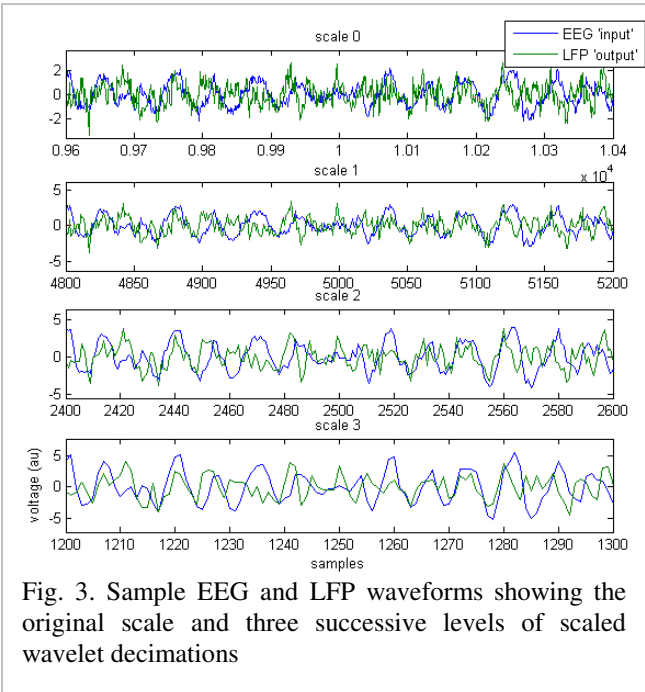


Fig. 3. Sample EEG and LFP waveforms showing the original scale and three successive levels of scaled wavelet decimations

IV. DISCUSSION

The MS-ARX technique showed improved prediction accuracy compared to the traditional ARX approach (which uses scale 0 only). This makes sense because the MS-ARX approach uses cross-validation to automatically select the best tradeoff between smoothing and preservation of signal details.

The results seen of decreased MSE and increased proportion of exogenous input weights also indicate that linear prediction of the STN LFP based on the cortical EEG is more accurate in the HP condition and is based more on cortical input. This indicates a greater amount of similarity between the population-based cortical and STN electrical activity in the HP case, and fits with previous reports based on individual neuronal correlation and spectral coherence methods.

In conclusion, the MS-ARX method is well-adapted to the high-level analysis of neural signals from different brain nuclei at multiple scales.

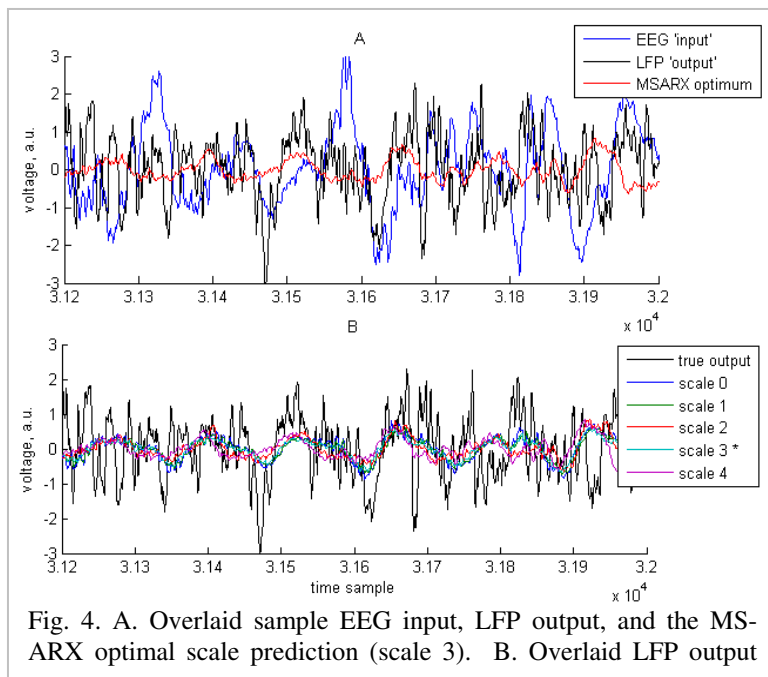


Fig. 4. A. Overlaid sample EEG input, LFP output, and the MSARX optimal scale prediction (scale 3). B. Overlaid LFP output

REFERENCES

- [1] M. N. Nounou and H. N. Nounou, "Improving the prediction and parsimony of ARX models using multiscale estimation," *Appl. Soft Comput.*, vol. 7, pp. 711-721, 2007.
- [2] A. Nambu, *et al.*, "Functional significance of the cortico-subthalamo-pallidal 'hyperdirect' pathway," *Neurosci Res*, vol. 43, pp. 111-7, Jun 2002.
- [3] G. Heimer, *et al.*, "Dopamine replacement therapy reverses abnormal synchronization of pallidal neurons in the 1-methyl-4-phenyl-1,2,3,6-tetrahydropyridine primate model of parkinsonism," *J Neurosci*, vol. 22, pp. 7850-5, Sep 15 2002.
- [4] A. Sharott, *et al.*, "Dopamine depletion increases the power and coherence of beta-oscillations in the cerebral cortex and subthalamic nucleus of the awake rat," *Eur J Neurosci*, vol. 21, pp. 1413-22, Mar 2005.
- [5] N. Mallet, *et al.*, "Disrupted dopamine transmission and the emergence of exaggerated beta oscillations in subthalamic nucleus and cerebral cortex," *J Neurosci*, vol. 28, pp. 4795-806, Apr 30 2008.
- [6] C. A. Lieu, *et al.*, "A water extract of *Mucuna pruriens* provides long-term amelioration of parkinsonism with reduced risk for dyskinesias," *Parkinsonism Relat Disord*, vol. 16, pp. 458-65, Aug 2010.
- [7] E. A. Clement, *et al.*, "Cyclic and sleep-like spontaneous alternations of brain state under urethane anaesthesia," *PLoS ONE*, vol. 3, p. e2004, 2008.